

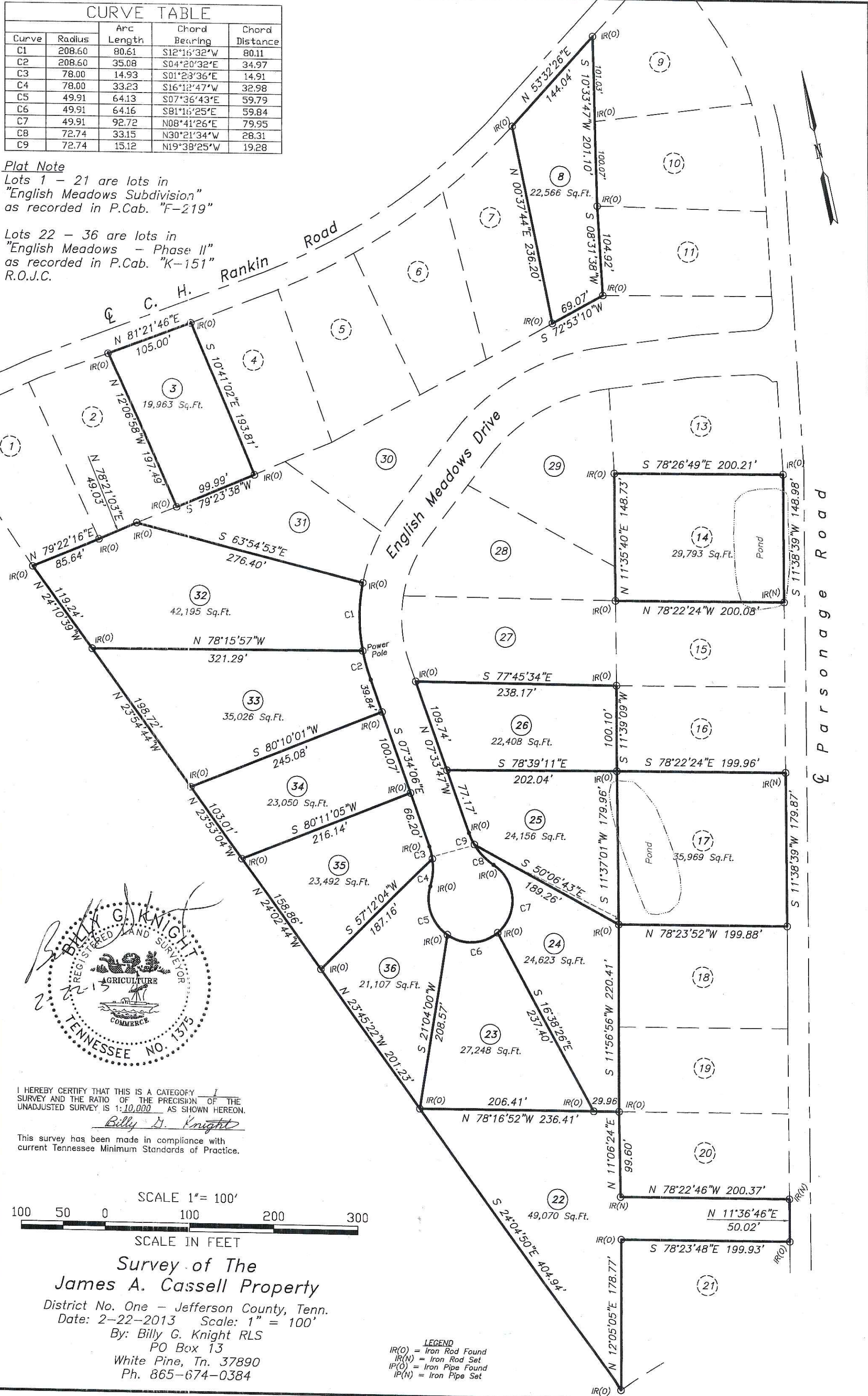
CURVE TABLE

Curve	Radius	Arc Length	Chord Bearing	Chord Distance
C1	208.60	80.61	S12°16'32"W	80.11
C2	208.60	35.08	S04°20'32"E	34.97
C3	78.00	14.93	S01°23'36"E	14.91
C4	78.00	33.23	S16°12'47"W	32.98
C5	49.91	64.13	S07°36'43"E	59.79
C6	49.91	64.16	S81°16'25"E	59.84
C7	49.91	92.72	N08°41'26"E	79.95
C8	72.74	33.15	N30°21'34"W	28.31
C9	72.74	15.12	N19°38'25"W	19.28

Plat Note

Lots 1 - 21 are lots in "English Meadows Subdivision" as recorded in P.Cab. "F-219"

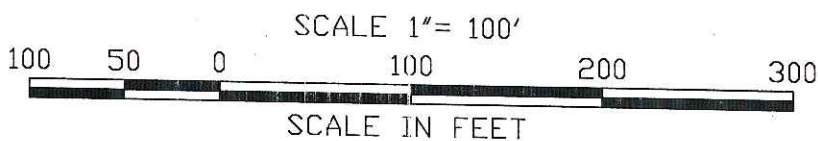
Lots 22 - 36 are lots in "English Meadows - Phase II" as recorded in P.Cab. "K-151" R.O.J.C.



I HEREBY CERTIFY THAT THIS IS A CATEGORY I SURVEY AND THE RATIO OF THE PRECISION OF THE UNADJUSTED SURVEY IS 1:10,000 AS SHOWN HEREON.

Billy G. Knight

This survey has been made in compliance with current Tennessee Minimum Standards of Practice.



Survey of The James A. Cassell Property

District No. One - Jefferson County, Tenn.

Date: 2-22-2013 Scale: 1" = 100'

By: Billy G. Knight RLS

PO Box 13

White Pine, Tn. 37890

Ph. 865-674-0384

LEGEND
 IR(O) = Iron Rod Found
 IR(N) = Iron Rod Set
 IP(O) = Iron Pipe Found
 IP(N) = Iron Pipe Set